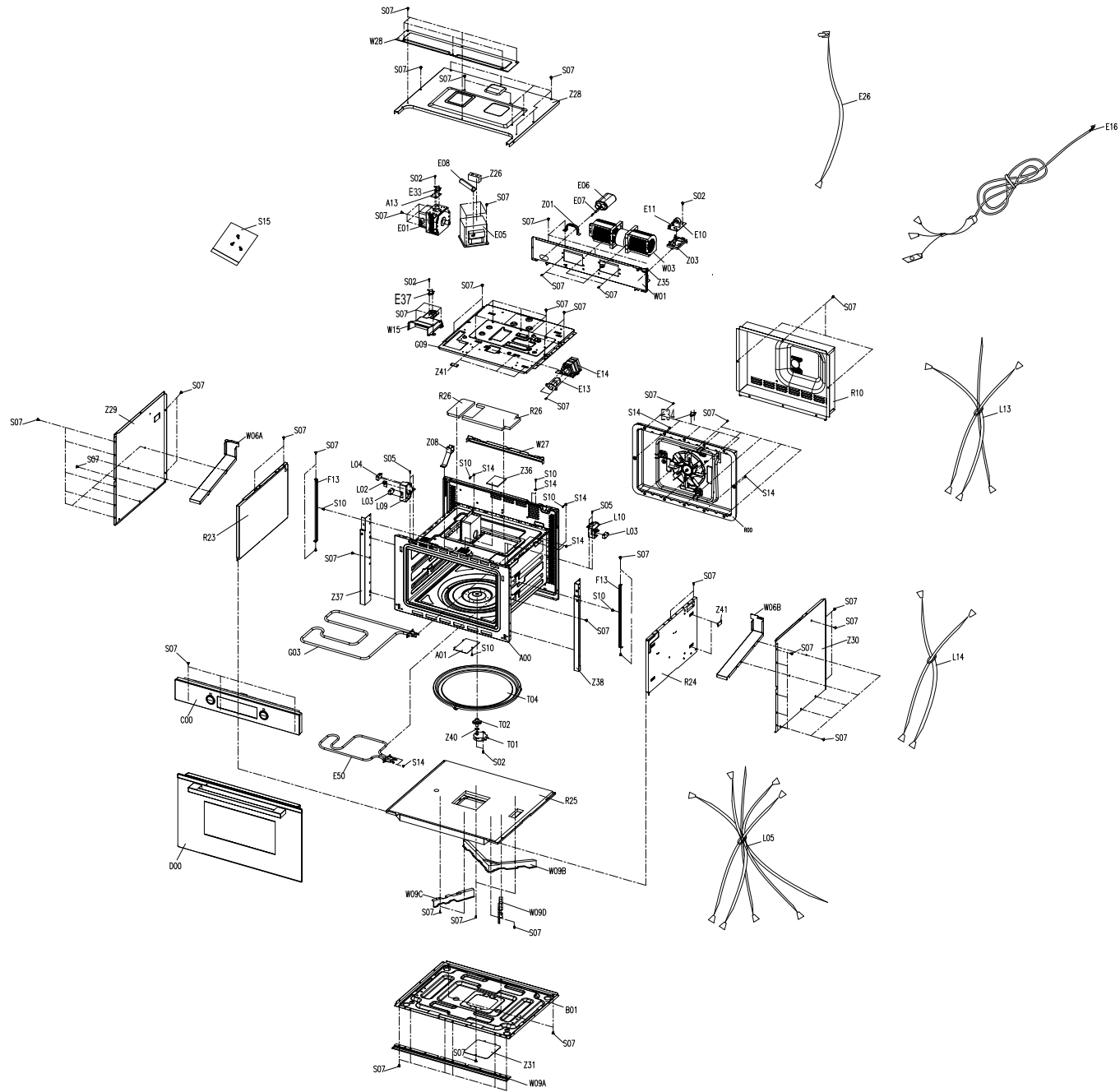


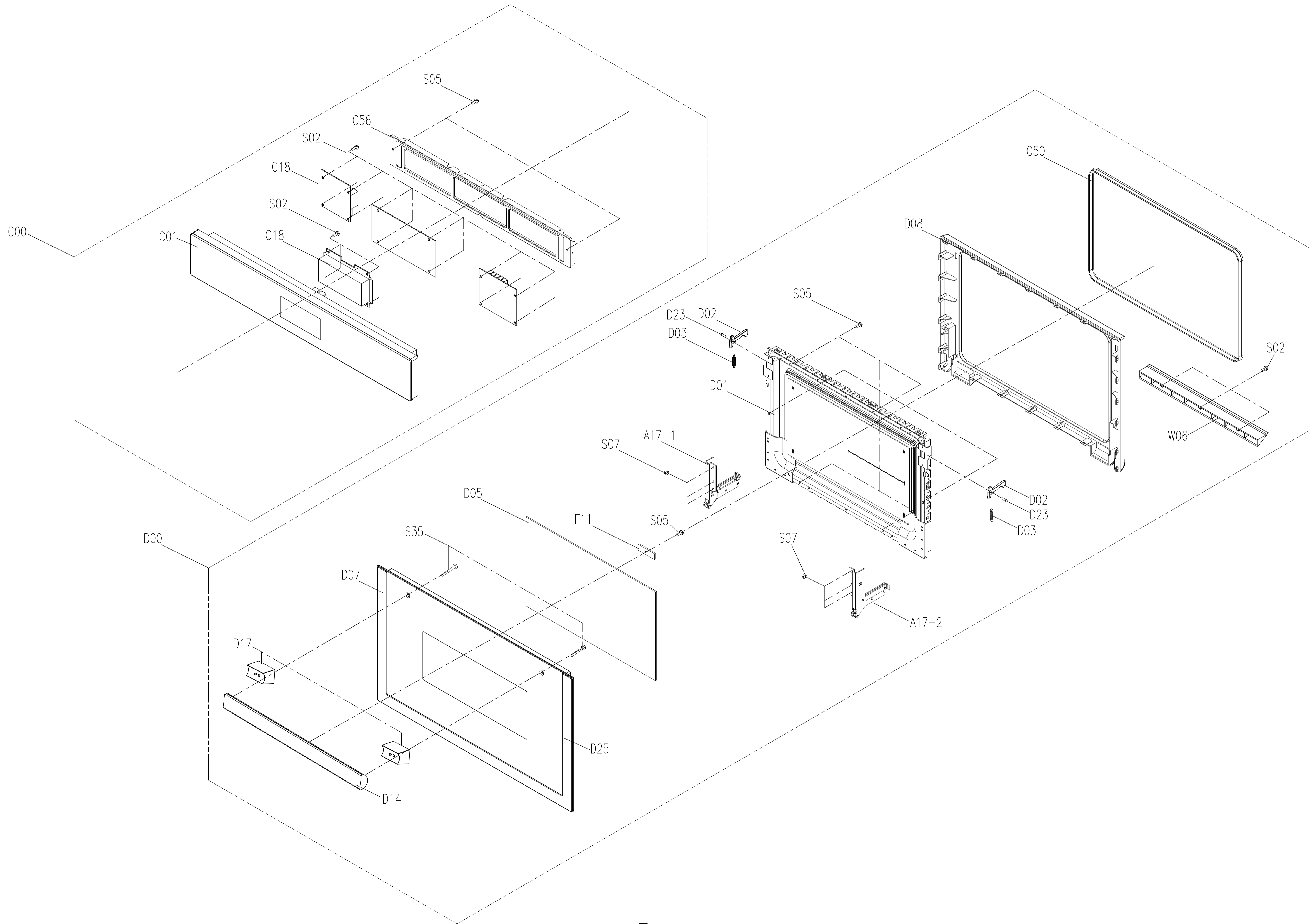
Compact Microwave

Model Number

GHCPO45

Parts Manual





Parts List

ID No	Apelson Code	MPN	Part Description	Qty
\	261511709202	12970000000342	RACK	1
\	261507701400	12970000000345	RACK	1
A00	AA0000002113	12270000032783	CAVITY ASSEMBLY	1
A01	AA0000000119	12570000000067	WAVE GUIDE COVER	1
A17-1+A17-2	AA0000002563	12270000032656	HINGE ASSEMBLY	2
B01	AA0000000087	12270000005158	BASEPLATE	1
C00	GHCPO45XCP	17270000B72412_12570000001649	CONTROL PANEL ASSEMBLY	1
C01	261300287700	12170000001279	CONTROL PANEL	1
C18	63900390	17170000004801	MI ASSEMBLY	1
C18	63900385	17170000003899	MI ASSEMBLY	2
C18	AA0000002564	17170000003913	MI ASSEMBLY	1
C34	69411555	12570000001649	CONTROL PANEL GLASS	1
C50	AA0000002145	12670000001672	SEALING RING	1
C56	AA0000002565	12270000008170	CONTROL PLATE BRACKET	1
D00	GHCPO45XDR	12270000B54384_12570000A37998	DOOR ASSEMBLY	1
D01	AA0000002121	12270000026060	DOOR FRAME DROP GLUE ASSEMBLY	1
D02	25108180	12270000020237	LATCH	2
D03	AA0000002566	12970000000385	SPRING	2
D05	AA0000002567	12570000000025	HEAT INSULATION GLASS	1
D06	AA0000002568	12570000A37998	DOOR GLASS	1
D07	AA0000002569	12170000025667	DOOR PANEL	1
D08	AA0000002125	12170000020623	DOOR GASKET	1
D14	261509415300	12970000000596	HANDLE	1
D17	261301814700	12170000004514	HANDLE PAD	2
D23	AA0000002570	12970000000031	DOOR SHAFT	2
E01	AA0000002571	17470000000804	MAGNETRON	1
E05	AA0000000071	17470000003522	H.V.TRANSFORMER	1
E06	AA0000000079	17470000000683	H.V.CAPACITOR	1
E07	AA0000000081	17470000001007	H.V.DIODE	1
E10+E11	AA0000000080	17170000002914	NOISE FLITER ASSEMBLY	1

E13	AA0000002084	17470000017698	INTEGRATED LAMP	1
E14	AA0000000154	12270000000202	LAMP SHADE	1
E16	AA0000000187	17470000000121	EUROPEAN STANDARD POWER CORD	1
E26	AA0000000138	17170000004580	SENSOR ASSEMBLY	1
E28	AA0000000164	17470000001561	H.V.FUSE	1
E33	AA0000000161	17470000001472	THERMOSTAT 160/95°C	1
E37	62101155	17470000009120	THERMOSTAT 150/90°C	1
E48	251201300325	17470000001471	THERMOSTAT 180/145°C	1
F11	AA0000002572	12170000003981	BRACKET	1
F13	261514104500	122700000008213	FIXING BRACKET	2
G03	AA0000000074	17470000001044	HEATER	1
G09	AA0000002146	122700000032719	HEAT INSULATOR	1
G10	AA0000000073	17470000001085	HEATER	1
L03	AA0000000148	17470000002315	MICROSWITCH INTERLOCK	2
L04	25109030	17470000008424	MICROSWITCH MONITOR	1
L05	AA0000002126	17470000011405	MAIN WIRE HARNESS	1
L09	AA0000000166	12170000011191	LATCH BOARD	1
L10	AA0000000165	12170000011190	LATCH BOARD	1
L11	AA0000000149	12170000007317	INTERLOCK LEVER	1
L14	261202802630	17470000001462	MAIN WIRE HARNESS	1
R00	AA0000002573	12270000B68356	CONVECTION ASSEMBLY	1
R10	AA0000002574	12270000006280	HEAT INSULATOR	1
R23	AA0000002128	122700000028956	HEAT INSULATOR ASSEMBLY	1
R24	AA0000002129	122700000028957	HEAT INSULATOR ASSEMBLY	1
R25	AA0000002130	122700000028958	HEAT INSULATOR ASSEMBLY	1
R26	AA0000002575	12470000000012	HEAT INSULATION COTTON	1
T01	AA0000000160	11002014000043	SYNCHRONOUS MOTOR	1
T02	AA0000000135	12570000000020	CERAMIC COUPLER	1
T06	AA0000000136	122700000003329	METAL TURNTABLE	1
W01	AA0000002132	122700000025637	MOTOR BRACKET	1
W03	AA0000000078	11002017000177	SHADED-POLE MOTOR	1
W06	AA0000002576	121700000000657	WIND GUIDE	1

W06A	AA0000002133	12270000025639	AIR DUCT	1
W06B	AA0000002134	12270000025638	AIR DUCT	1
W09A	AA0000002135	12270000024697	WIND GUIDE	1
W09B	AA0000000118	12170000000659	WIND GUIDE	1
W09C	AA0000002136	12170000020289	WIND GUIDE	1
W09D	AA0000002137	12170000020290	WIND GUIDE	1
W15	AA0000002577	12170000020823	WIND GUIDE	1
W27	AA0000002138	12270000032717	AIR DUCT	1
W28	AA0000000121	12270000008147	METAL BRACKET	1
Z01	AA0000002578	12270000006217	CAPACITOR HOLDER	1
Z03	AA0000000077	12170000009426	FILTER MOUNTING PLATE	1
Z08	AA0000000151	12170000003919	WIRE CLAMP	2
Z28	AA0000002139	12270000028936	COVER	1
Z29	AA0000002140	12270000B51865	COVER	1
Z30	AA0000002141	12270000036308	COVER	1
Z31	AA0000000084	12270000000203	METAL COVER	1
Z36	AA0000000155	12570000000937	LAMP GLASS	1
Z37	AA0000000126	12270000008187	FRONT PLATE SIDE BRACKET	1
Z38	AA0000000127	12270000005547	FRONT PLATE BRACKET	1
Z39	AA0000000188	12970000000431	INSTALLATION KIT	1
Z40	262200300001	12170000000070	PAD	1
Z41	AA0000000096	12170000007374	SEALING COVER	9